



55 Bimbadeen Drive Muswellbrook NSW

4 2 4

This good sized brick home sits on the high side of the street facing a tree lined Reserve. In the yard you will find a 6 x 10 shed with remote door and mezzanine storage. The home has 4 bedrooms, the main with walk in robe, ensuite and roll down security shutter for the Shift Worker. All 3 kids rooms have built in robes, 2 with roll down shutters. The kitchen is in good condition and gets plenty of Winter sun, there is a breakfast bar, dishwasher, wall oven and electric cooktop. Plenty of living space with the open plan tiled family and dining area plus there is a carpeted Media Room. Off the family room is a paved outdoor entertainment area, again facing North, the perfect spot to sit and enjoy the sun. There is a double garage with remote door and internal entry. Double gates to the side of the house give access to the shed. There are two

Type : House
Price : \$ 615,000
Land Size : 849.1 sqm
View : <https://www.jtsrealty.com.au/sale/nsw/hunter-valley-upper/muswellbrook/residential/house/8016155>

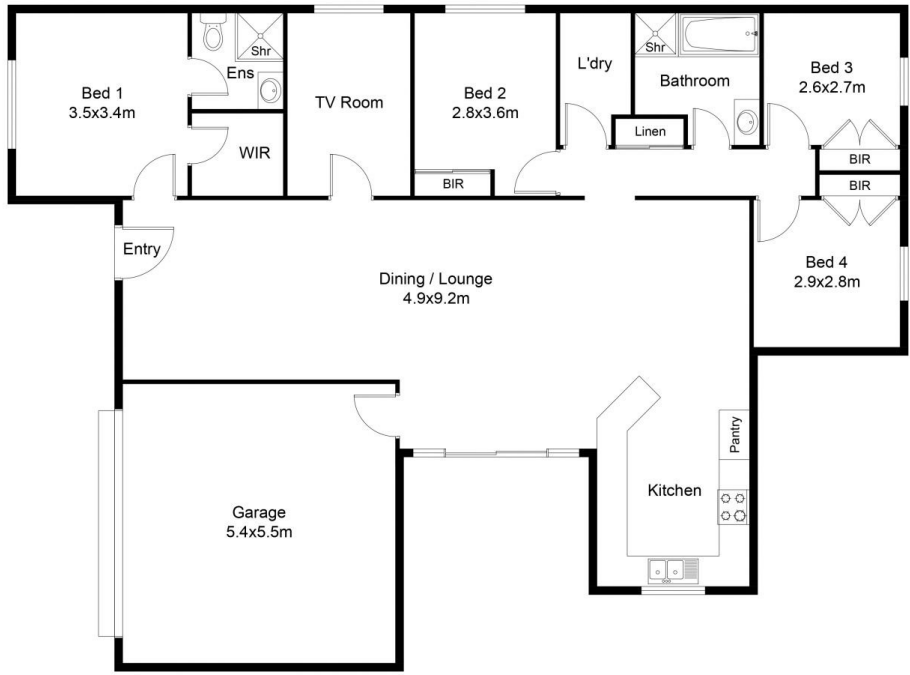


Jay Shepherdson
02 6541 5331



Tiffany JTS Realty
02 6541 5331

[For full version visit the website](https://www.jtsrealty.com.au)



FLOOR PLAN

This floor plan including furniture, fixture measurements and dimensions are approximate and for illustrative purposes only. BoxBrownie.com gives no guarantee, warranty or representation as to the accuracy and layout. All enquiries must be directed to the agent, vendor or party representing this floor plan.

55 Bimbadeen Drive, Muswellbrook, NSW 2333